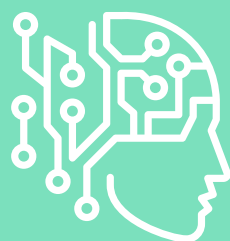


Phitomas's Guide to Innovative Solutions

Unlocking the Potential of Technology for Business Growth.

[Read more >>](#)





Driving Business Growth with Innovative IT Solutions

At Phitomas, we help businesses thrive in a dynamic world. We optimize product flow, information flow, and financial flow, empowering you to be more agile and responsive to changing market demands. Our solutions unlock faster deployment, increased asset productivity, and quicker speed-to-market, giving you the edge you need to succeed.

1

About Us

Learn about our mission, vision, and partnerships with leading tech providers driving impactful innovation.

2

Solutions Area

Discover solutions tailored to optimize processes and drive growth across industries.

3

Product Portfolio

Browse our range of products designed to meet specific business needs and deliver results.

4

Services

Explore our comprehensive services designed to drive business growth and efficiency.

5

Contact Us

Reach out for inquiries or support. Our team is here to help you succeed.



About Us

Phitomas is one of the leading solution providers of consulting, digital transformation and technology services across South East Asia. Partnering with some of the world's leading technology providers, Phitomas is at the forefront of innovation to address the entire breadth of clients' needs in the evolving world of cloud, digital platforms and automation.

OUR MISSION

To provide businesses with the knowledge & confidence to adopt the technology by making sense of the automation landscape & applying it to their businesses.

OUR VISION

To be the preferred solutions provider (brand of choice) for organisations that are determined to accelerate overall productivity & efficiency through digital transformation.



TECHNOLOGY PARTNERS

Phitomas is committed to delivering top-tier solutions, software, and services by partnering with leading enterprise solution providers like SAP, Infor Global Solutions, Microsoft, Honeywell, and Zebra. These collaborations enable Phitomas to offer cutting-edge, customized technology that supports customer success.



Solutions Area

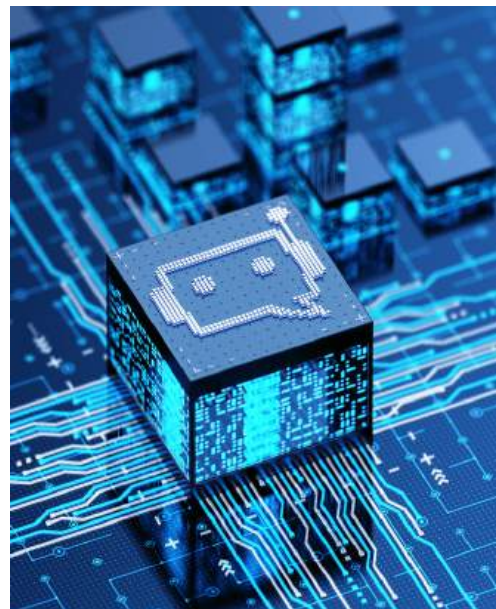
UNRAVELING THE WONDERS OF ARTIFICIAL INTELLIGENCE

AI enhances business processes across manufacturing, logistics, customer service, and marketing by automating tasks and improving efficiency. In manufacturing, AI optimizes production, quality control, and reduces costs, while machine learning predicts equipment failures and schedules maintenance.

Phitomas specializes in AI solutions that automate tasks, optimize workflows, and provide predictive insights to minimize downtime and lower costs. Our AI tools leverage data for smarter decision-making, helping businesses improve quality control, forecast demand, and stay competitive in a fast-paced market.

PRODUCT OFFERINGS

- Infor Coleman
- Phitomas GenAI Conversational Commerce
- Phitomas GenAI Knowledge Management



EMPOWERING GROWTH WITH THE FUTURE OF ERP

Enterprise Resource Planning (ERP) delivers an integrated, real-time view of key business processes, enabling organizations to track resources such as cash, raw materials, and production capacity, as well as commitments like orders and payroll.

By consolidating data from various departments—such as manufacturing, purchasing, sales, and accounting—ERP systems streamline processes, improve decision-making, and enhance visibility into organizational performance and key metrics.

Phitomas empowers businesses with tailored ERP solutions that integrate and optimize core processes, offering real-time insights to enhance decision-making and efficiency.

Our solutions streamline resource tracking, automate workflows, and unify data across departments like manufacturing, sales, and finance. With Phitomas, businesses gain greater visibility, agility, and control, enabling them to adapt quickly to changing market demands and achieve sustainable growth.

PRODUCT OFFERINGS

- Infor SyteLine
- SAP Business One



UNLOCKING EFFICIENCY WITH MES

Manufacturing Execution Systems (MES) are software tools designed to provide real-time control and information for manufacturing operations, automating and optimizing production from raw materials to finished goods.

MES includes features like production scheduling, process control, quality management, and inventory tracking, helping manufacturers enhance efficiency, reduce costs, and improve operational visibility.

Positioned between ERP and process control systems, MES focuses on shop floor activities, ensuring smooth production flows.

Phitomas helps businesses leverage MES to streamline manufacturing operations, automate workflows, and gain deeper insights, ensuring higher productivity and cost savings.

PRODUCT OFFERINGS

- Axacute Data Collection
- Infor Factory Track



EXPLORING THE POTENTIAL OF IOT IN MODERN BUSINESS

The Internet of Things (IoT) connects and monitors industrial assets, equipment, and machines to boost efficiency, reduce downtime, and enhance productivity. By utilizing sensors to track parameters like temperature and vibration, IoT helps predict when maintenance is needed, preventing unexpected failures.

IoT also optimizes production processes by tracking material flow and adjusting schedules in real time to improve efficiency.

Moreover, it enhances safety by monitoring environmental conditions such as temperature and humidity, providing alerts about potential hazards.

Phitomas helps businesses implement IoT solutions that connect and monitor key assets, optimize production, and predict maintenance needs, ensuring smoother operations, increased productivity, and a safer working environment.



PRODUCT OFFERINGS

- Axacute IoT



DISCOVERING THE POWER OF CLOUD-BASED SOLUTIONS

Cloud-based solutions deliver flexible, scalable, and cost-effective technology services through the internet, enabling businesses to access and manage data, applications, and resources without the need for on-premise infrastructure.

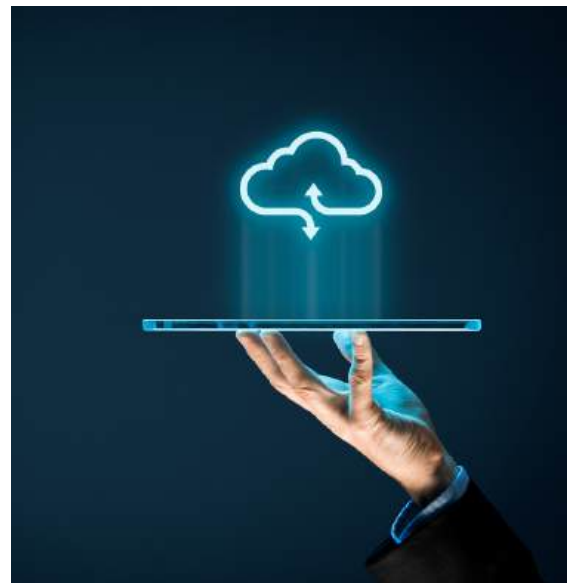
These solutions improve collaboration, increase accessibility, and provide real-time insights, empowering businesses to operate more efficiently and respond quickly to market changes.

Phitomas helps businesses harness the power of cloud-based solutions by offering scalable, secure, and integrated systems that enhance data accessibility, streamline workflows, and support decision-making.

Our cloud solutions enable businesses to optimize operations, reduce IT overhead, and gain a competitive edge with real-time information and enhanced collaboration across teams and departments.

PRODUCT OFFERINGS

- Infor OS
- Info CloudSuite Industrial Enterprise



Product Portfolio

✓ AXACUTE

Axacute is a cloud-based solution tailored for small manufacturers to enhance visibility into warehouse and shop floor operations. It provides insights into operational costs, improves cycle times, and boosts on-time deliveries.

The solution includes two modules:

01

Inventory Module – Streamlines warehouse operations like receiving, put-away, inventory management, order picking, and shipping.

02

Production Module – Manages shop floor tasks such as material issuance, WIP tracking, scrap recording, and labor/machine hours logging.

“With Axacute, my business is able to automate work center data collection, eliminate paper-based processes and get accurate labor hours.”



Accounting / ERP

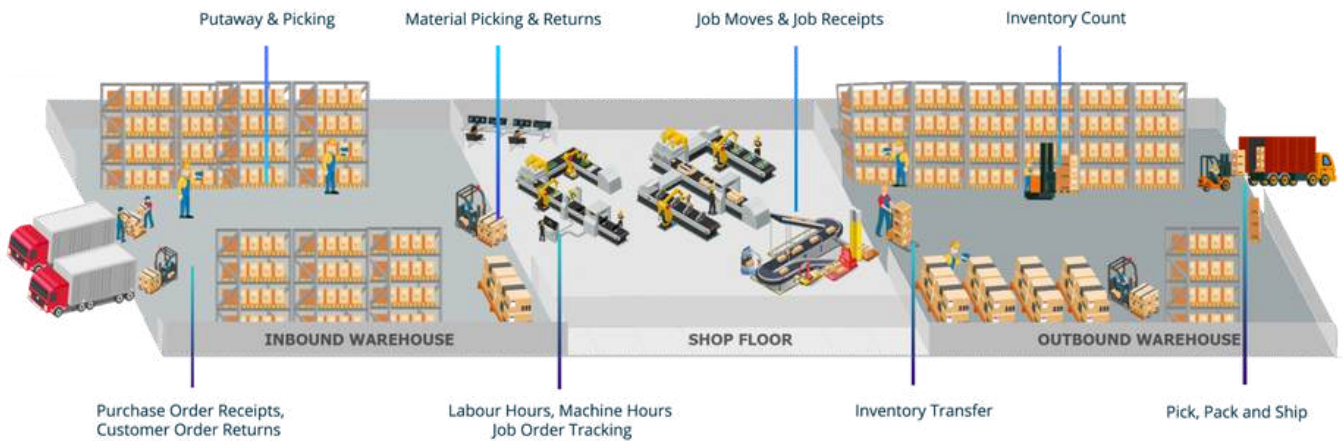


Axacuta

Warehouse Execution (RM)

Shopfloor Execution

Warehouse Execution (FG)



OPEN API

Axacuta offers an easy to connect Open REST API which enables connection to your online stores, custom websites, ERPs, BI Tools and etc. Our Open API enables pulling and pushing the data available in Axacuta.

- Import and export data
- Inquiries
- Reports
- Historical transaction logs
- Audit logs – tracks value changes to field
- Custom fields
- Roles and screen permission



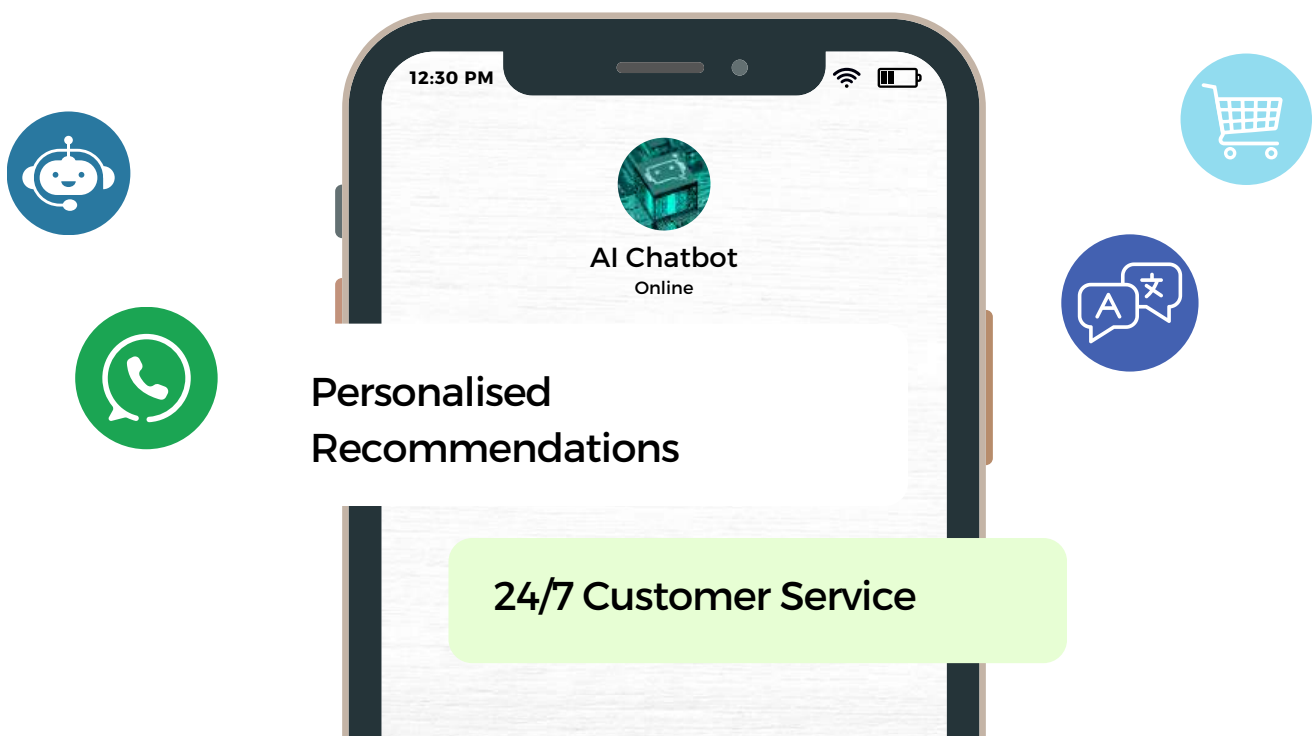
Product Portfolio

✔ GENAI CONVERSATIONAL COMMERCE

Conversational commerce is revolutionizing the way brands engage with customers by leveraging chat and messaging platforms to promote and sell products and services. With AI-powered tools like chatbots and automated systems, businesses can deliver personalized buying experiences, delighting customers and staying ahead in their buying journey.

Generative AI, or gen AI, complements this innovation by creating original content—including text, images, videos, and more—in response to user prompts. Using advanced deep learning models, generative AI identifies patterns in vast datasets to understand and respond naturally to customer interactions.

Operating through phases of training, tuning, and continual refinement, generative AI ensures high-quality and accurate outputs, making it a powerful enabler of conversational commerce.



KEY BENEFITS

01

Say goodbye to frustrating chatbots. GenAI Chatbots deliver human-like interactions, streamline support, and ensure customer satisfaction.

02

Integrate AI with ERP/CRM for automated syncing, accurate orders, real-time updates, and analytics, enhancing operations and customer experience.

03

We personalize chatbot development by training AI with your data, ensuring it reflects your brand's voice and values for accurate, engaging interactions.

04

Integrates seamlessly with messaging platforms, enhancing accessibility, speeding up responses, and improving customer satisfaction across popular channels.

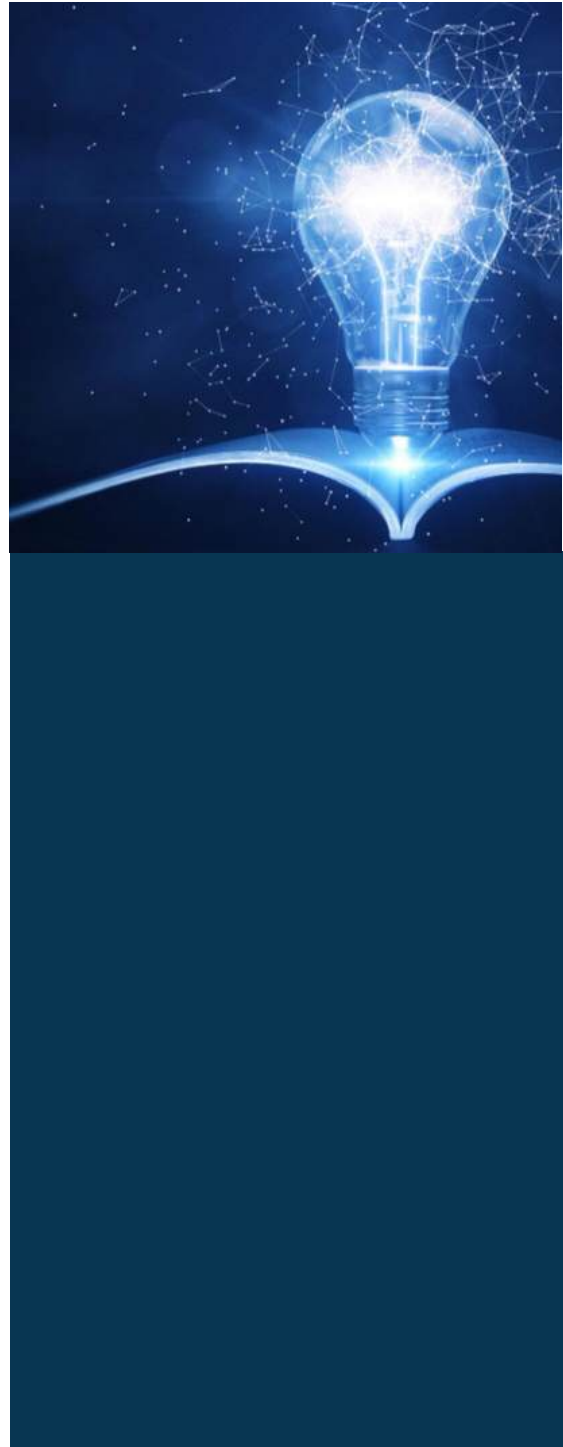
Product Portfolio

✓ GENAI KNOWLEDGE MANAGEMENT

Phitomas' GenAI Knowledge Management (KM) solutions revolutionize efficiency by automating information capture and retrieval, reducing time and resources. Powered by LLM algorithms, these AI systems intelligently organize data, minimizing manual effort in knowledge management.

Unlike traditional passive systems, GenAI KMs interpret user intent, delivering precise and relevant results to complex queries. Customers can independently resolve issues, decreasing dependence on support teams.

GenAI KMs combine generative AI with traditional knowledge management frameworks, transforming how we access and interact with information. As they advance, GenAI KMs promise to reshape learning, work, and engagement with the world.



Product Portfolio

4 WAYS GENERATIVE AI ENHANCES KNOWLEDGE MANAGEMENT

01 Content Creation

Generative AI automates article writing, transforming notes or data into full-length articles. This helps employees, like support agents, quickly update the knowledge base as they resolve issues, leading to more comprehensive resources for future use.

02 Enhanced Search

AI-powered chatbots improve search functionality by understanding natural language, offering precise answers from within lengthy articles, and providing users with direct responses and source links.

02 Gap and Duplicate Detection

AI-powered chatbots improve search functionality by understanding natural language, offering precise answers from within lengthy articles, and providing users with direct responses and source links.

04 Automated Governance

AI automates the governance process by checking for sensitive data in articles before publication, speeding up the review process and making knowledge available faster.

PERSONALIZE THE KNOWLEDGE BASE FOR YOUR BUSINESS

GenAI personalizes your knowledge base by using business-specific information to tailor responses and outputs. It analyzes customer interactions and historical data to generate content that reflects your brand voice and addresses customer queries effectively.

GenAI adapts to user feedback, updating the knowledge base with relevant industry trends and insights while maintaining consistent brand messaging.

This personalized approach enhances the user experience, ensuring customers receive relevant and timely information, which boosts engagement and satisfaction by making it easier for users to find what they need quickly.



Product Portfolio

✓ INFOR CLOUDSUITE INDUSTRIAL (CSI)

Infor CloudSuite Industrial is an advanced ERP solution tailored for discrete and process manufacturers, leveraging over 30 years of experience to support small- to medium-sized businesses. With features like predictive analytics, lean production tools, and collaboration capabilities, it helps streamline core processes and manage complexity. The solution drives growth, enhances customer service, boosts productivity, and improves cost control.

CORE CAPABILITIES

Production Planning and Scheduling (APS)

Optimizes planning by considering all supply constraints, improving delivery schedules and resource utilization with minimal effort.

Financial Management

Streamlines costing and financial accounting, providing real-time analytics to help businesses make quick, informed decisions.

Quality Management

Improves product quality, reduces costs, and manages quality across the supply chain, while tracking non-conformance costs.

Supply Chain Management

Streamlining operations to enhance efficiency, reduce costs, and improve decision-making across the supply chain.

Project Management

Simplifies project and resource management, offering real-time tracking of resources, revenues, expenses, and profitability.

Collaboration Portals

enhances collaboration with customers, suppliers, and resellers by offering customizable portals with real-time ERP data.



Product Portfolio

✓ INFOR CLOUDSUITE INDUSTRIAL ENTERPRISE (CSIE)

Infor CloudSuite Industrial Enterprise is a comprehensive cloud-based software solution designed to meet the specific needs of manufacturing and industrial businesses. It offers integrated functionalities for managing various aspects of manufacturing, supply chain, finance, and operations. With features like real-time data analysis, streamlined processes, and scalability, CloudSuite Industrial Enterprise helps businesses optimize their operations, improve efficiency, and drive growth.

KEY FEATURES

Digital Backbone

Automation streamlines tasks and reduces manual effort, while network analytics and business intelligence provide valuable insights. The system's extensibility allows customization to meet specific business needs.

Integrated Operations

Leverage industry best practices for project-based manufacturing processes, with global, multi-site planning capabilities to optimize operations across locations..

Improved Customer Engagements

Easily configure products and share 2D and 3D images, while managing them from inception through delivery and service.

Supply Chain Transparency

Maintain global supplier visibility, utilize advanced warehouse management, and eliminate stock-outs and delays to enhance efficiency and streamline operations.



Product Portfolio

INFOR FACTORY TRACK

Infor Factory Track is a comprehensive manufacturing automation solution designed for warehouse and shop floor operations which features production scheduling, inventory management, quality control, and real-time production data tracking to enhance efficiency and cut costs.

Additionally, it manages supply chain, automates production, and integrates seamlessly with Infor's industrial manufacturing. It offers a unified platform to oversee all production aspects, contributing to overall factory performance enhancement.

01

Shop Floor module supports touchscreen operations via wired or wireless networks, serving as an information hub and execution support for production personnel.

02

Time Track module allows for the collection of time and attendance data, which can be fully integrated into labor collection.

03

Warehouse Mobility module allows for real-time inventory updates to the ERP system through the use of barcodes over a wireless network.

Product Portfolio

KEY FEATURES

Real-Time Data Collection and Analytics

Track and monitor production processes in real-time, providing greater visibility into operations.

Barcode Handling

Standardize inventory operations with barcode support. Create your own barcode templates for maximum efficiency.

Inbound Logistics

Accelerate material movement, improve putaway, and gain real-time, accurate information on receipts and transfers.



Track and Trace

Get full visibility into lot and serialized units, including end items and their components, throughout the manufacturing value chain.

Job Material Transactions

Automate purchasing and set optimal safety stock levels to streamline material issues, work-in-progress, and key transactions.

Overtime Rules

Take advantage of attendance rules flexibility, along with configurable overtime and double-time options.

Punch to Payroll Automation

Conquer your labor tracking and attendance automation challenge with Infor Factory Track's Time Track module.

Container Handling

Simplify material handling with container and handling unit support.

Labour Data Collection

Understand the true cost of labour by automating labour collection via handheld devices and shop floor kiosks.

Support for Projects

Collect engineering time on projects via elapsed time data capture.

Mobile Access

Provides mobile access and allows the factory staff to access the system from anywhere and monitor the production process from their mobile device.

Product Portfolio



INFOR ENTERPRISE PERFORMANCE MANAGEMENT (EPM)

Infor Enterprise Performance Management (EPM) is a software solution that helps organizations manage and analyse their financial and operational performance. It includes a range of tools and applications for budgeting, forecasting, financial consolidation, and reporting.

EPM can also integrate with other enterprise systems, such as ERP, CRM, and supply chain management, to provide a more complete view of an organization's performance.

CORE CAPABILITIES

Financial Consolidation and Close

Allows for the consolidation of financial data from multiple sources and streamlines the closing process.

Budgeting, Forecasting and Planning

Provides tools for creating and managing budgets, forecasts, and plans.

Financial Reporting and Analysis

Offers a variety of reporting and analysis capabilities, including ad-hoc reporting and dashboards.

Strategic Modeling

Provides a platform for modeling and simulating different business scenarios.

Risk Management

Helps identify and manage financial risks and opportunities.

Data Integration

Enables the integration of data from various systems, such as ERP and CRM.

Collaboration

Allows users to collaborate and share information in real-time.

Cloud and Mobile Capabilities

Infor EPM is available on Cloud, and mobile-enabled.

Built-In Analytics

Embedded analytics to help make data-driven decisions.

Business Intelligence

Deliver relevant, actionable insights to the right people, in the right format, at the right time.

Product Portfolio

✓ INFOR OPERATING SERVICE (OS)

Infor OS is a forward-looking operating service that integrates productivity, business processes, and Artificial Intelligence, offering unprecedented operational insights.

It prioritizes user-centric experiences and serves as a unifying foundation for your business ecosystem. This creates a connected, intelligent network that automates tasks, anticipates needs, and provides real-time information to stakeholders, driving your business forward.



KEY FEATURES

Data Analytics And Business Intelligence

Includes built-in analytics and reporting capabilities that allow organizations to easily access and analyse data from multiple sources.

Machine Learning

Includes machine learning capabilities that can be used to gain deeper insights into data and make more informed decisions.

Microservices Architecture

Built on a microservices architecture, which allows organizations to easily integrate different applications and data sources.

Cloud-Based

A cloud-based platform enabling organizations to access the system from anywhere while eliminating the need for costly hardware.

AI-Driven Automation

Includes AI-driven automation capabilities that can help organizations automate repetitive tasks and improve efficiency.

Integration

Allows integration with other enterprise systems, such as ERP, CRM, and Supply Chain Management.

Product Portfolio

✓ INFOR COLEMAN

Infor Coleman is an AI tool offering rapid, clear benefits and ROI without the need for specialised skills or unpredictable service engagements. Built on the robust Infor OS platform, it simplifies complex technologies like natural language, intelligent automation, machine learning, and voice user experience.

Coleman's components are user-friendly and designed to build value as users interact with them. It aims to revolutionise AI, aiding organizations in achieving digital transformation goals.

KEY FEATURES

Digital Assistant

Serves as a personal assistant, offering insights for faster decisions, handling repetitive tasks, and engaging in user conversations.

Machine Learning

Utilizing data networks and machine learning, Infor Coleman enhances connected devices and optimizes inventory, transportation, and predictive maintenance.

Natural Language Processing (NLP) and Image Recognition

With natural language processing and image recognition, Coleman interprets language and images, benefiting various industries.

Self-Service Citizen Skill Building

Offers a user-friendly interface and advanced capabilities for self-service skill building, empowering users to develop their AI skills.



Voice-Powered Enterprise Experience and Automation

Enables users to interact with enterprise applications through voice commands, enhancing the user experience and automating tasks.

(RPA) Robotic Process Automation

Provides attended bots using UI recording for quick automation without process changes and integrates with Infor OS iPaaS for unattended bots.

Product Portfolio

✓ SAP BUSINESS ONE

SAP Business One (SAP B1) is a cost-effective, scalable ERP solution designed for small-to-medium businesses, integrating key functions like accounting, sales, inventory, and operations. It automates processes, offering real-time updates and comprehensive visibility for better control and decision-making. Compatible with SAP HANA and Microsoft SQL Server, SAP B1 also provides customization options to support business growth and changing needs.

CORE CAPABILITIES

Financial Management

Includes accounting, budgeting, fixed assets, financial reporting, and cash flow management.

Sale & Customer Management

Includes CRM, pricing, sales forecasting, lead management, and order management.

Purchasing & Inventory Management

Includes purchase order management, inventory tracking, and vendor management.

Production Management

Includes bill of materials, production orders, resource capacity planning and material requirements planning (MRP).

Project Management

Includes project tracking, interactive Gantt Chart, resource allocation, and budgeting.

Reporting & Analytics

Includes dashboards, ad-hoc reporting, and business intelligence tools.

Mobility Applications & Collaboration Tools

Includes mobile access to the application, and integration with Microsoft Office and other collaboration tools.

Integrations

Integrates with other SAP products, as well as with popular third-party applications such as Microsoft Office, Shopify, and Salesforce.

Cloud-Based Deployment

Available as a cloud-based solution, which allows for easy access, minimal infrastructure requirements, and automatic updates.



Services

Phitomas specializes in comprehensive application services to help businesses leverage software, platforms, and applications effectively. Whether transitioning from legacy ERPs to modern SaaS tools or managing various business applications, Phitomas ensures seamless support across the entire application lifecycle.

We offer services from development and implementation to ongoing management and upgrades, enhancing system performance through automation, data collection, and AI while ensuring data security. Our tailored solutions focus on ERP implementation, cloud migration, and application management, all aimed at improving user experience and driving business growth.

01

CLOUD MIGRATION SERVICES

Phitomas helps businesses adopt and implement cloud solutions, bridging skill gaps with our certified team and low-cost delivery centers to drive agility and adaptation.

02

APPLICATION MANAGEMENT SERVICES (AMS)

Our AMS tackles business challenges like agility, legacy system issues, and resource constraints, boosting throughput, uptime, and productivity to help your enterprise thrive.

03

PROJECT MANAGEMENT

Phitomas provides end-to-end project management services, ensuring efficient execution, cost-effectiveness, and results that exceed expectations.

04

CUSTOM AI DEVELOPMENT

We provide tailored AI solutions, including predictive analytics, machine learning, and NLP, using the latest technologies to drive efficiency and innovation.

Get In Touch

Suite 301, Block A, Level 3,
Pusat Dagangan Phileo Damansara 1, No. 9,
Jalan 16/11, Off Jalan Damansara,
46350 Petaling Jaya,
Selangor Darul Ehsan, Malaysia.

enquiry@phitomas.com

+603 7890 1389

