

PHITOMAS

 **JAPP[®]**
RTLS

JAPP - Real Time Location System

www.phitomas.com



01. BEACON TAGS

Attached to assets or worn by people, these devices utilize BLE to receive and transmit data.



02. ANY WI-FI NETWORK

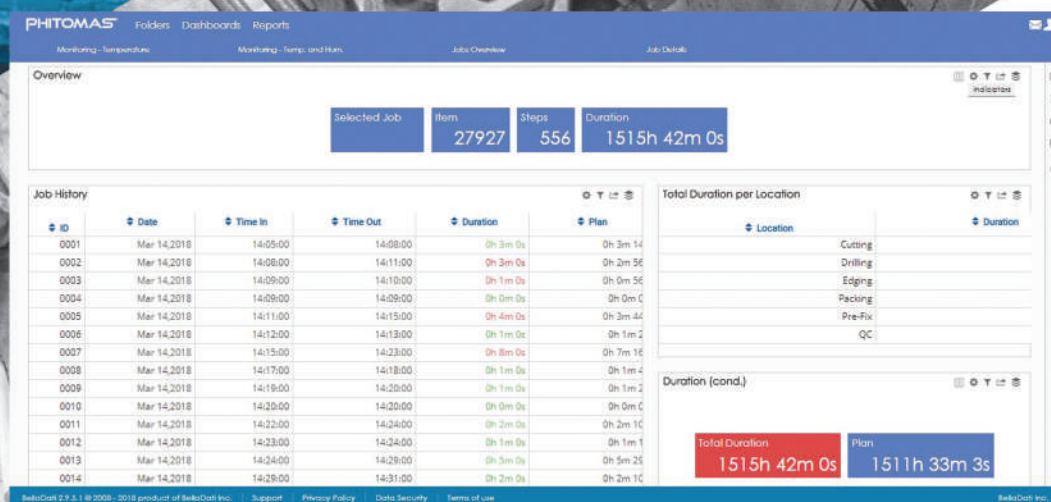
Wi-Fi based tag data is sent to JAPP software in real-time.



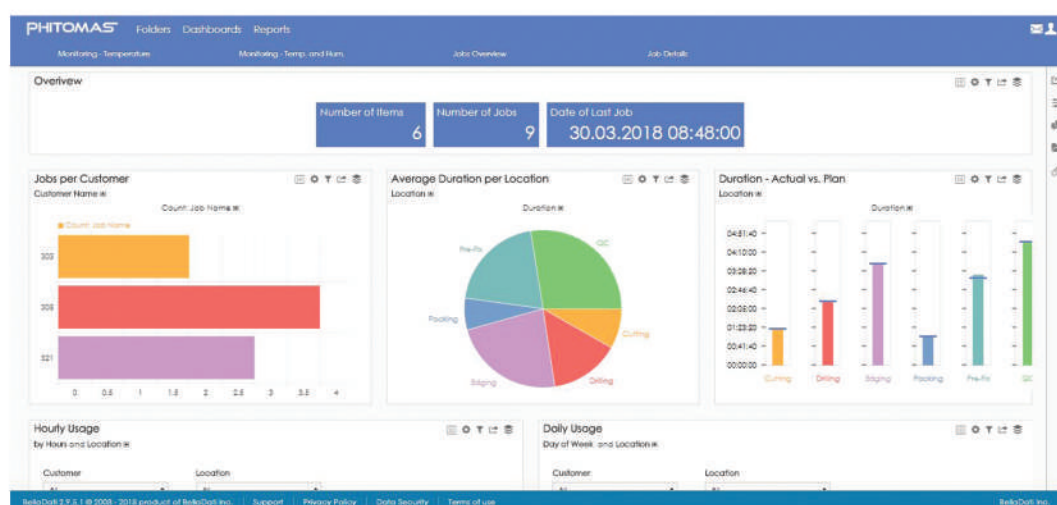
03. ENHANCED ASSET VISIBILITY

See analytics with tag locations on real-time, plus get message and alert management all in a user-friendly software interface.





JOB DETAIL



JOB OVERVIEW



COST EFFICIENT

Leverages low-cost connectivity and hardware options.



STANDARD BASED TECHNOLOGY

Uses Beacon Bluetooth and Gateway standards.



LOCATION ACCURACY

The most accurate Bluetooth based proximity system.



OPTIMIZE FLOW OF MATERIALS

Knowing what stage of development your product, inventory or assets.

Barcoding and radio-frequency identification (RFID) tags has been around a long time and are very useful for asset tracking in various sectors such as manufacturing, retail, healthcare and hospitality. Compared to barcode and RFID, JAPP uses low-energy Bluetooth beacons for real-time asset tracking. So, what makes JAPP a good candidate for solving real-time asset locating challenge?



SCAN ME



Suite 301, Block A, Level 3,
Pusat Dagangan Phileo Damansara 1,
No. 9, Jalan 16/11, 46350 Petaling Jaya,
Selangor Darul Ehsan, Malaysia.



www.phitomas.com
enquiry@phitomas.com



+60 (3) 7985 3353